

Oxfordshire County Council

Infrastructure Funding Statement April 2020 to March 2021

Contents

Introduction.....	Page 3
Summary table.....	Page 4
Policy context.....	Page 5
S106 Contributions received.....	Page 7
Expenditure/projects delivered.....	Page 9
Funding priorities for 21/22 and future years.....	Page 14

1. Introduction

1.1 Welcome to Oxfordshire County Council's Infrastructure Funding Statement (IFS). This document sets out income and expenditure relating to planning obligations secured under Section 106 of the Town and Country Planning Act 1990 (as amended) over the last financial year. It also sets out, amongst other things, the S106 planned expenditure priorities in the future.

1.2 Local authorities are required to produce an infrastructure funding statement on an annual basis in accordance with Schedule 2 of the Community Infrastructure Levy Regulations 2010 (as inserted by the 2019 regulations).

1.3 S106 planning obligations are used to mitigate the impacts of development to make the development acceptable in planning terms.

1.4 The IFS is in two parts. Part one reports on planning obligations secured, received and allocated during the period from 1st April 2020 – 31st March 2021. Part two reports on future county council infrastructure and service priorities expected to be fully or partly funded by S106 contributions.

1.5 The IFS has three appendices:

- Appendix 1: Funded projects for 2020/21
- Appendix 2: New planning obligations entered into in 2020/21
- Appendix 3: Developer contributions received but unspent in 2020/21

2. Summary Table

Service Area	Funding received in 2020/21	Funding spent in 2020/21	Funding held (Received across all years) ¹	Funding secured (across all years) expected to be received in future years
Education	£53,745,876	£27,106,600	£114,991,138	£142,490,198
Transport	£11,873,006	£3,722,500	£63,906,608	£74,050,160
Libraries	£765,249	£27,632	£5,488,099	£2,099,681
Adult Social Care	£360,531	£61,972	£3,964,355	£1,033,482
Countryside	£229,473	£24,817	£1,209,269	£866,275
Waste	£311,600	-	£4,502,800	£946,009
Adult Learning	£4,714	-	£187,164	£89,614
Museums	£4,359	-	£119,261	£5,769
Minerals sites	£4,989	£3,709	£684,916	£62,703
Fire & Rescue	£71,862	-	£148,346	£462,579
Other	£58,301	£147,261	£30,541,461	
Totals	£67,429,960	£31,094,491	£225,743,417	£222,106,470

2.1 The summary table above shows the S106 funding received in 2020/21 and the funding that has been spent in each service area (this may have been received in earlier years).

2.2 There is further detail regarding the funding received in 2020/21 but unspent, the service areas it covers and the infrastructure it is allocated to in Appendix 3.

2.3 Appendix 1 gives details of the projects that have been funded through S106 during 2020/21. This funding may support all or part of a project and projects may run across several different financial years.

2.4 Appendix 2 – lists the planning obligations entered into during 2020/21 and provides a link to the associated planning application. This can be read in conjunction with Appendix 3 which gives the details of the infrastructure covered in each planning obligation.

2.5 Funding secured across all years expected to be received in future years, includes not just the funding from planning obligations entered into in 2020/21 but those signed in previous years. Secured funding not received means the relevant trigger for payment has not yet have been reached. E.g., A library contribution may

¹ This includes £57,038,667 of funds received in 20/21 that was not spent in year

be due before the 500th occupation on a development site but that may not be reached until 7 years after the planning obligations has been entered.

3. Policy Context

3.1 On 1st September 2019, amendments to the [Community Infrastructure Levy Regulations 2010](#) came into force which require the county council to annually publish receipts and expenditure in relation to S106 contributions and CIL.

3.2 These regulations require local authorities to publish an annual infrastructure funding statement.

3.3 As the county council is not a CIL charging authority this statement will report primarily on S106 contributions plus information on CIL contributions allocated by our Local Planning Authority (LPA) partners, i.e., district councils.

3.4 LPAs may charge CIL and are required to report on receipts and expenditure in their own annual IFS. This is intended to improve transparency and publicise that development is accompanied and mitigated by infrastructure.

4. S106 and CIL definition and Oxfordshire position and process

What is S106?

4.1 Planning obligations under Section 106 of the [Town and Country Planning Act 1990](#) (as amended), are a mechanism which makes a development proposal acceptable in planning terms, which would not otherwise be acceptable. They are focused on site specific mitigation of the impact of development. They may take the form of land, specific works, or financial contributions.

What is CIL?

4.2 CIL is a non-mandatory charge which can be levied by local authorities on new development in their area. It can be an important tool for local authorities to use to help them deliver the infrastructure needed to support development in their area, particularly where strategic infrastructure is required to support growth.

4.3 CIL only applies in areas where a local authority has consulted on, and approved, a charging schedule which sets out its CIL rates and has published the schedule on its website. Most new development which creates net additional floor space of 100 square metres or more, or creates a new dwelling, is potentially liable for the levy.

4.4 Currently, some LPAs in Oxfordshire have adopted a CIL charging schedule, some are in the process of adopting a CIL charging schedule, and some are continuing to collect just S106 contributions with no plans to move to CIL.

4.5 Table 1 below demonstrates the CIL charging status of the Oxfordshire LPAs and contains links to their published schedules:

Table 1 CIL and S106 position in Oxfordshire

LPA	CIL charging status
Oxford City	Adopted
Vale of the White Horse	Adopted
South Oxfordshire	Adopted
Cherwell	Not adopted
West Oxfordshire	Not adopted

5. Relationship between LPA's and Oxfordshire County Council for S106 and CIL

5.1 The County Council can seek planning obligations to mitigate impact provided they meet three tests set out in Reg 122 of the Community Infrastructure Levy Regulations 2010 (as amended).

5.2 In addition to S106 planning obligations the County Council may also seek and secure CIL from a LPA towards the cost of a project.

6. CIL Funding

6.1 In 2020/21 Oxfordshire County Council received £200k from Oxford City Council for controlled parking zones.

7. Contributions received by Oxfordshire County Council

7.1 The county council is responsible for ensuring the provision of a range of services to our residents. We therefore seek S106 contributions and/or facilities from developments that would have an additional impact on service provision and that impact cannot be met by the current provision, including but not limited to:

- Adult Social Care
- Education
- Fire & Rescue
- Libraries
- Transport
- Waste
- Countryside

7.2 Planning obligations can be in the form of financial contributions, works on or off site and the provision of land.

7.3 Services are also provided by the district councils, such as affordable housing, waste collection and leisure and district councils may seek planning obligations towards their services.

7.4 Local Planning Authorities also consult with other infrastructure providers including highways England; the NHS; Police and the Environment Agency to understand the full infrastructure needs required to mitigate against the impact of a development.

Non- financial contributions

7.5 The County Council may also secure non-financial planning obligations. These may be in the form of land transfers to facilitate the delivery of infrastructure. For example, the County Council may request that a developer transfer land for the delivery of a new school. They may also be in the form of the provision of fire hydrants.

8. Part 1: S106 contributions received

8.1 This part addresses the requirements set out in [Schedule 2 of the Community Infrastructure Levy \(Amendment\) \(England\) \(No. 2\) Regulations 2019](#)

The reported year is from 1st April 2020 to 31st March 2021.

The total amount of money to be provided under any planning obligations which were entered into during the reported year

8.2 The County Council entered into 42 planning obligations during the financial year 2020/21. The value of contributions to be provided from these planning obligations totals £20,286,964 before uplifting following indexation. Indexation will be applied at the point of payment. These contributions may not yet have been paid to the County Council. They are calculated and requested at agreed trigger points (for example on the commencement of development or when a certain number of occupations is reached). This means that payments could be phased over a number of years.

8.4 £67.4 million S106 funding was received in 2020/21 These contributions may either fund part or all of a project.

8.5 A large proportion of the funding received will fund new schools and school expansions to accommodate the increase in school aged children generated by new development. Funding also includes contributions for public transport, highway works, adult social care and library projects, amongst other things.

8.6 Please see 'Appendix 2 - All new planning obligations entered into in 2020/21 for the full list of contributions.

Summary details of any non-monetary contributions to be provided under planning obligations which were entered into during the reported year

(ii) in relation to educational facilities, the number of school places for pupils which will be provided, and the category of school at which they will be provided.

8.7 No educational facilities are to be provided as non-monetary S106 contributions under planning obligations which were entered into during the reported year.

The total amount of money (received under any planning obligations) which was allocated but not spent during the reported year for funding infrastructure

8.8 The County Council allocates all funding received. The total amount allocated to be spent in later years, from funds received in 2020/21 is £57.7m.

8.9 Where project funding comes from multiple sources or delivery of the project has a long lead-in period there is often a gap between funding allocation and spend.

The total amount of money (received under any planning obligations) which was spent by the authority (including transferring it to another person to spend)

8.10 The county council spent £31.1 million from S106 during the reported year. This includes funding received in 2020/21 and earlier years.

Service	Number of Capital projects	Total spend
Education	41	£27,106,600
Libraries	3	£27,632
Transport (including bus services)	25	£3,722,500
Adult Social Care	2	£61,972
Countryside	1	£24,817
Minerals sites	1	£3,709
Fire & Rescue	1	£71,862
Other	1	£147,261
TOTAL	75	£31,094,491

Expenditure/Projects delivered

8.11 The county council delivered several projects funded either fully or partly through S106 contributions in the reported year. A selection of those projects is shown below. **A full list is shown in Appendix 1 – S106 expenditure 2020/21.**

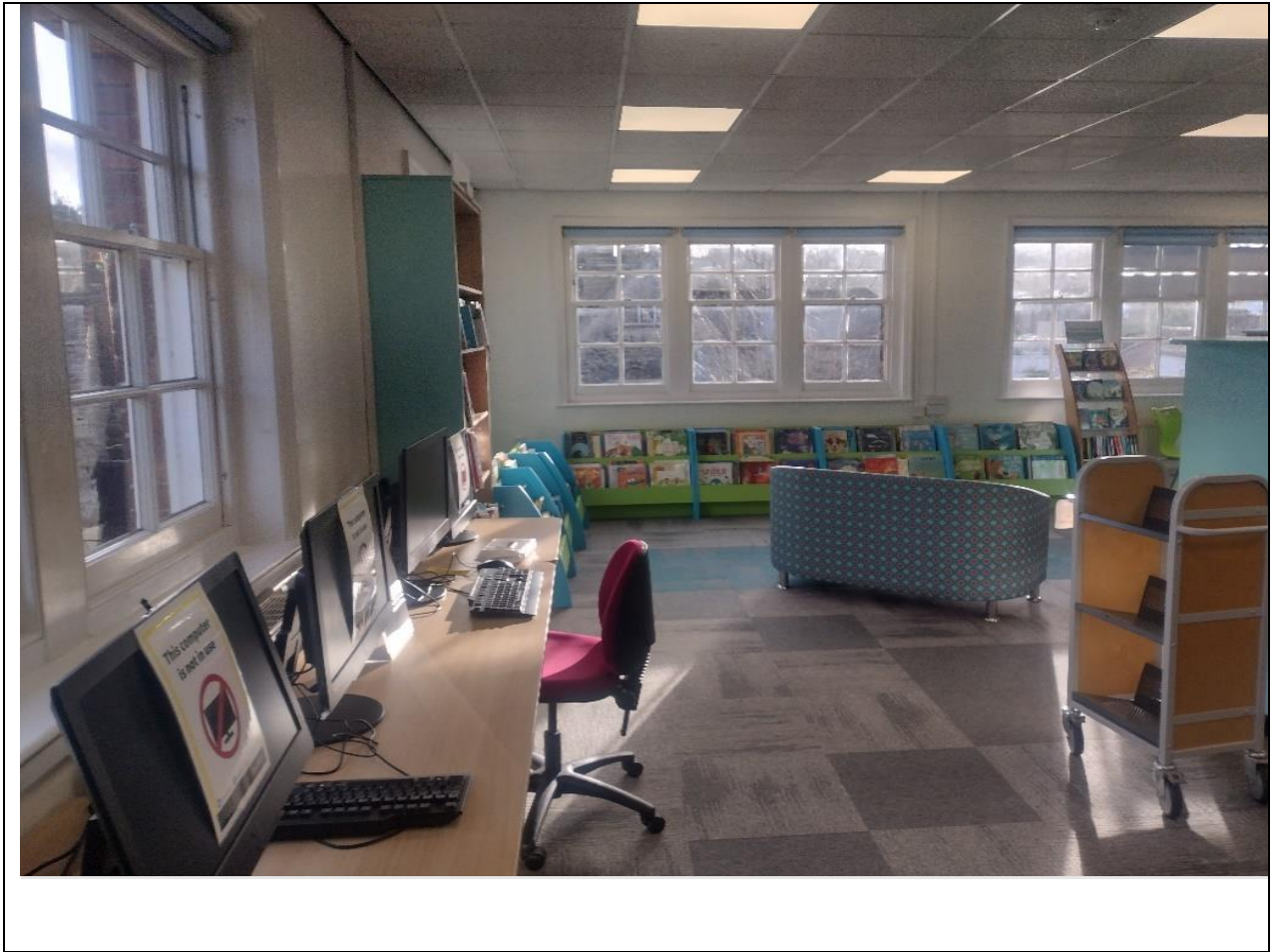
Local authority area	Oxford
Location	Barton Park
Project description	New Barton Park Primary School – New 1.5FE Primary School (315 pupil places + nursery)
Date opened	September 2020
Funding	Fully funded by S106 planning obligations

Barton Park Primary School



Local authority area	SODC
Location	Wheatley Library, The Merry Bells, High Street, Wheatley,
Project description	Library refurbishment to increase usability of space with additional seating drop in working areas. Removal of old shelving and replacement with new furniture and shelving in a new layout plus ancillary works such as flooring and repainting. Costs on this project were kept to a minimum by reuse of surplus shelving in good condition from a previous site which had been fitted out with s106 funding.
Date opened	December 2020
Funding	Funded by a combination of: <ul style="list-style-type: none"> • S106 planning obligations. • the Friends of Wheatley Library. • The Merry Bells (landlord); and • Library Service contribution from revenue budget.





Local authority area	Cherwell
Location	Banbury - A number of small pots of funding have been used within the Banbury locality to deliver projects that have helped communities at the very local level:
Project description	Easington – weight limit, Springfield Avenue speed table and pedestrian crossing – have helped to make this residential area feel safer for those walking and cycling, with two secondary schools in the vicinity.
Date opened	Spring 2021
Funding	£86,000



Please see Appendix 3– Developer Contributions received but unspent 2020/21.

8.12 No S106 monies were used to repay any money borrowed.

8.13 OCC received £102,012 in admin fees in 2020/21 to be used for monitoring in relation to the delivery of planning obligations.

8.14 The county council held £225m at the end of the reporting period. This includes £57,038,667 of funding that was received in 2020/2021 and was not spent in year. S106 funding is closely monitored and robustly managed via a vigorous internal sign-off mechanism to ensure that it is used for the purpose identified within the original planning obligation.

8.15 This funding is allocated towards infrastructure or service delivery projects which may be:

- dependent on the delivery of cumulative housing sites to trigger demand.
- dependent on other funding mechanisms to support delivery.
- dependent on other processes to complete prior to project delivery, for example the transfer of land.
- large single projects for which delivery is already underway but for which funding has not yet been drawn down.

9. Part 2: Funding priorities for 2021/22 and future years

9.1 The information in this section outlines some key county council service future funding priorities. Each service's statutory obligations are explained to give context to the infrastructure priorities.

9.2 Infrastructure named below may be wholly or partly funded by developer contributions.

Overview of how priorities are made

9.3 In alignment with the [National Planning Policy Framework](#), the county council identifies and plans future infrastructure requirements at a very early stage through the local plan process. These infrastructure requirements are then set in local planning policy.

9.4 All sites usually generate the need for new infrastructure unless existing capacity exists. On strategic sites, the county council would generally expect the site to generate demand for new infrastructure to mitigate the development itself, such as a new school. The cumulative effect of smaller sites may also trigger the need for new infrastructure including a new school and in this instance contributions from relevant developments will be pooled to fund the project.

9.5 The county council works collaboratively to develop a joint working approach with our local planning authority partners to ensure provision of infrastructure is adequate for the revised need.

9.6 Infrastructure priorities are also guided by up-to-date or emerging policies including:

- Statutory requirements.
- Local plan representations.
- County council policies, including the Local Transport and Connectivity Plan.
- Growth and Transport Plans.
- Transport planning supporting strategies, which support the Local Transport and Connectivity plan
- Service business plans.

9.7 The county council is developing an infrastructure pipeline project to monitor current project delivery on transport and identify need for future projects. This project will develop further detail for demand, funding and timing of project delivery to support growth.

County council services overview

9.8 An overview of some of the county council service areas that engage on infrastructure related growth matters is shown below. Further work on county council priorities through a pipeline of projects is currently in development.

Education

Statutory requirements

9.9 The county council has a duty to ensure that there are sufficient school places to meet the needs of the population now and in the future. Education provision includes nursery, primary, secondary and sixth form education, and special needs services and facilities

9.10 The county council acts as a commissioner of school places, ensuring there are a sufficient number of places through the expansion of existing or provision of new schools.

9.11 As part of the planning process for new developments, the county council assesses existing school place capacity against a variety of data sources including estimated pupil yield. If there is considered to be insufficient capacity in local schools to cater for the development, new schools are built, or existing schools are expanded.

Future priorities

9.12 Current projections show that Oxfordshire could require 21 new primary and 4 new secondary schools to meet the demands of growth over the next 10 years, as well as a significant expansion programme of existing schools to meet the proposed scale of new housing growth across the county. These are outlined within our representations to Local Plans developed by our Local Planning Authority partners. The county council also considers the provision of special educational needs and disabilities (SEND) places and if existing capacity will not be sufficient, appropriate provision will be created.

9.13 Planning for the delivery of these school projects is firmly linked with the acceleration of housing supply. Officers work collaboratively with our local authority partners to monitor development progress and programme projects to ensure sufficient capacity is available to meet demand.

9.14 School place planning is complex and further information on how the authority meets the demand for school places can be on the Council's website; [Planning enough school places | Oxfordshire County Council](#)

Future projects include -

- Thame - Lord Williams School (Secondary School) Expansion
- Shrivenham -Relocation and Expansion of Shrivenham CE Primary School
- Wallingford - Relocation and Expansion of St Nicholas CE Infant School
- NE Didcot – New Primary School
- North Abingdon – New Primary School
- Valley Park, Didcot – New Primary Schools

Early Years Education

Statutory requirements

9.15 The county council has a number of statutory duties regarding free early education and childcare including:

- free early education for two-year-olds.
- free early education for three- and four-year olds.
- 30 hours free childcare for three and four-year olds; and
- all working families with children up to the age of 14 (18 for children with special education needs and disability) can expect the local authority to ensure there are sufficient childcare places available for their children to ensure they are able to continue to work.

9.16 Early years education providers include nurseries, childminders, preschools, and playgroups. All registered childcare providers who care for children from 0 - 5 years old must comply with the Early Years Foundation Stage and register with Ofsted.

9.17 The county council has an additional statutory duty to ensure there is enough childcare for working parents. This covers children 0 – 14-year-olds (19 years for children with SEND) and includes out of school provision such as holiday clubs and after school clubs.

Future priorities

9.18 New housing developments impact on the availability of free early education and childcare places in the county, the county council therefore requires all new primary schools to include nursery provision. Where existing schools are being expanded additional early years places will be created through the expansion of nursery classes or the expansion of places in the private, voluntary and independent sector including day nurseries and pre-schools. The county council will also respond to changing government legislation which may impact on the delivery model in securing these additional places.

9.20 The county council works to project future demand for places to align with growth and support Local Plans and monitors ongoing demand as development applications come forward.

Transport

Statutory requirements

9.21 The county council supports the delivery of safe, reliable journeys, sustainably, while balancing the needs of the assets, network operation and customers using the resources available.

9.22 In response to the climate emergency Oxfordshire County Council has published its declaration, “Climate Action for a Thriving Oxfordshire” setting out our commitment to be a zero-carbon organisation by 2030, and fully playing our part in creating a zero carbon Oxfordshire.

9.23 The county council has a number of transport aims and objectives in order to meet the challenge of a cleaner, greener and more sustainable county. We aim to:

- Identify, deliver and promote interventions and infrastructure that seek to reduce the proportion of journeys made by private car by making the use of public transport, walking and cycling more attractive.
- Increase the number of children walking, cycling or using public transport to travel to school, helping to improve health, increase physical activity and improve air quality;
- Improve public health and wellbeing by increasing levels of walking and cycling, reducing transport emissions and continually reducing the number of people killed or seriously injured on Oxfordshire’s roads;
- Procure and deliver the county council’s passenger transport services ensuring not only that the county council discharges its statutory and discretionary transport duties but that – in partnership with commercial operators – attractive, safe and sustainable bus services are provided in areas of significant growth.

Future priorities

9.24 Major projects are a joint ambition for the county council with our partner authorities and central Government. Key strategic projects will be supported to deliver wider growth ambitions.

9.25 For Oxford, the councils have put forward bold plans to reduce traffic levels across Oxford and which will tackle congestion, improve air quality and will make bus journeys quicker and more reliable. It will also enable more road space to be

reallocated for walking and cycling improvements. Known as Connecting Oxford, the project combines traffic filters, a workplace parking levy and a package of public transport, walking and cycling improvements. The councils aim to start implementation from 2023, subject to the outcomes of consultation and scheme approval.

9.26 The Oxford Zero Emission Zone will lead to cleaner air, quieter streets and contribute to the councils' action on climate change. It will accelerate the uptake of zero and lower emission vehicles and lead to other positive behavioural changes such as modal shift from private car to public transport and walking and cycling.. The councils will introduce pilot scheme in a small number of city centre streets in February 2022, with a wider ZEZ covering the whole city centre to be implemented in 2023, subject to the outcomes of consultation and scheme approval. The Oxford LCWIP is a detailed 10-year plan which sets out how to improve cycling and walking in Oxford. The plan includes a target to increase cycling in Oxford by 50% by 2031 and the evidence of how this is to be achieved.

9.27 In southern Oxfordshire the transport priorities are to deliver major schemes in the Didcot area to support the growth across both district areas. The projects include widening the A4130, Science Bridge (a new bridge over the railway), Didcot to Culham river crossing and the Clifton Hampden bypass. These schemes have high quality walking and cycling routes integrated into them and will allow greater route choice for public transport.

9.28 As well as delivering major multi-modal schemes, we are also focussing on Local Cycling and Walking Infrastructure Plans (LCWIPs). We will look at Abingdon in the first instance and work with SODC to produce the Didcot LCWIP. By producing LCWIPs this will enable us to focus S106 and CIL spend on schemes contained within them as well as seeking developers to directly deliver schemes where appropriate. We will also undertake a study to set out what Science Vale Active Travel Network Phase 2 should look like – again with a view to securing relevant S106 monies towards the delivery.

9.29 In the Cherwell and West locality area there will be a focus to spend the small pots on important local schemes and the larger funding allocations are being used to match fund other funding sources, such as the Housing & Growth Deal. There is a clear focus on delivering for active travel modes and the s106 funding will be used to meet these objectives where possible.

9.30 The County Council will aim to spend S106 monies collected for traffic calming in the village of Drayton. Some of S106 money collected for the traffic calming scheme has gone directly to the Vale of White Horse District Council, via a bi-partite agreement. The County Council will work with the District Council to transfer these funds. The County Council is working with Drayton Parish Councils to identify key areas and schemes to be delivered in the village.

9.31 The County Council is currently working to update the Local Transport Plan. The updated strategy is being called the Local Transport and Connectivity Plan (LTCP), to better reflect our strategy both for digital infrastructure and for connecting the whole county.

9.32 The updated LTCP will include measures to work towards enabling a zero carbon Oxfordshire transport network by 2040 and will set out in more detail the policies and schemes needed to enable a reduction in unnecessary private vehicle use through development of better sustainable travel choices. The LTCP will be supported by a set of area and corridor strategies (to be developed in 2022) which will outline how the LTCP vision and outcomes are delivered across the county. They will create more detailed plans that can be used to guide future scheme development, funding bids, support and enable sustainable growth, responses to planning applications and developer contributions.


9.33 The economic and housing growth agenda for Oxfordshire will need to involve the creation of whole, new sustainable communities through 'place making', rather than just through provision of buildings and roads, if it is to be successful. The county council will continue to work with our local authority partners to achieve this.

9.34 The Council maintains and develops the council's Highway Asset Management Plan in line with governments 'Well Managed Highways' guidance and our Local Transport Plan. Programmes of work will be evidence driven using data and local intelligence to ensure a balance of managing the asset and delivering local community needs is achieved.

9.35 The Council's expenditure on public transport services and infrastructure is expected to increase significantly in the next few years. In 2020/21 the Council spent in excess of £2.2m on S106-funded bus services. Infrastructure improvements, such as new and improved bus stops associated with development, are also taking place at an exponential level. The continued success of the county demands improvements to the bus network and the Council has been successful in obtaining significant S106 contributions to meet this objective.

Future projects include -

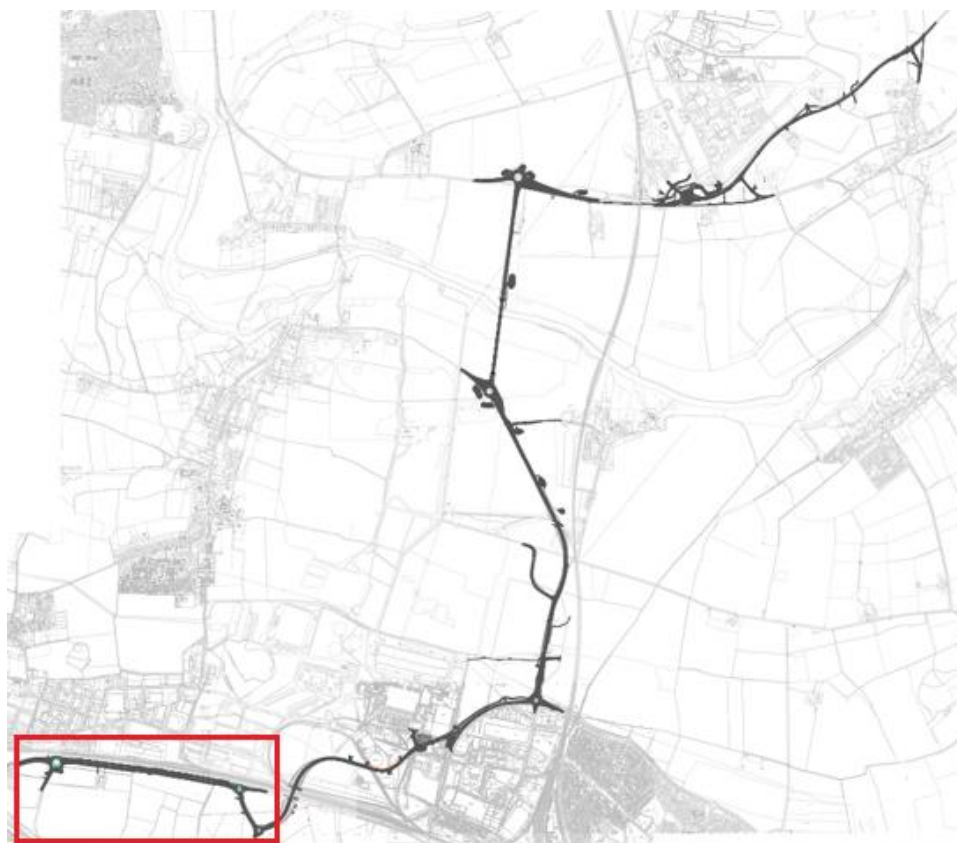
Local authority area	Oxford City
Location	Oxford
Project description	Controlled Parking Zones (9 zones)
Current stage	Implementation
Expected delivery date	2021/22
Total cost	£ 265,000 S106 allocated
Funding sources	S106 + CIL

Local authority area	Banbury
Location	Tramway Road/Station Approach
Project description	this scheme will deliver a bus and taxi link past the station to improve bus journey times and improve connectivity, and a new access into the station car park to avoid car trips travelling through one of the most congested junctions in Banbury. These improvements will provide benefit to many residents to the south of Banbury and help to unlock housing growth.
Current stage	Preliminary design
Expected delivery date	2023
Total cost	£4.2m (Housing & Growth Deal + S106)
	

Local authority area	Bicester
Location	London Road
Project description	Provision of a new cycleway from the junction with the A41 to the level crossing.
Current stage	Preliminary design
Expected delivery date	Spring 2022
Total cost	£552,288
S106 contribution	£552,288 from two s106 agreements
Additional funding sources	None

Local authority area	Vale of White Horse District Council
Location	Didcot
Project description	A4130 Dualling – Dualling the A4130 from the Milton Gate Junction eastwards to the ‘old 4130 roundabout’ including pedestrian and cycling infrastructure.
Current stage	Preliminary design
Expected delivery date	2024
Total cost	£22,214,000
Funding sources	Part funded by S106 with forward funding from Housing Infrastructure Fund

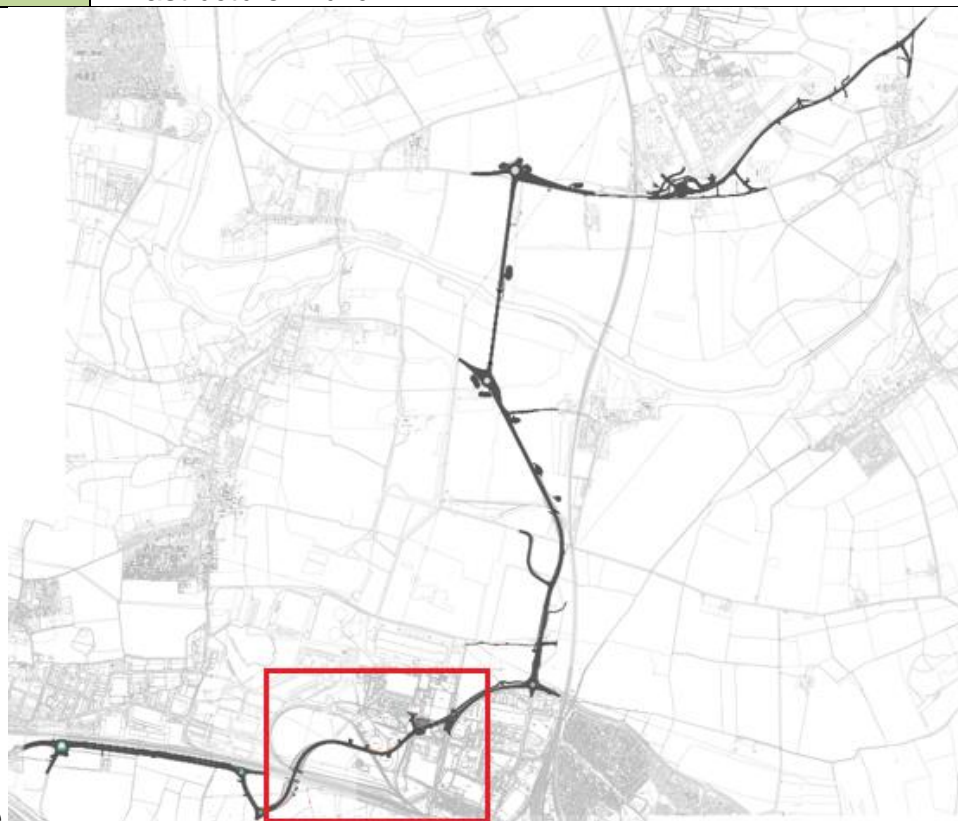
Plan of



scheme

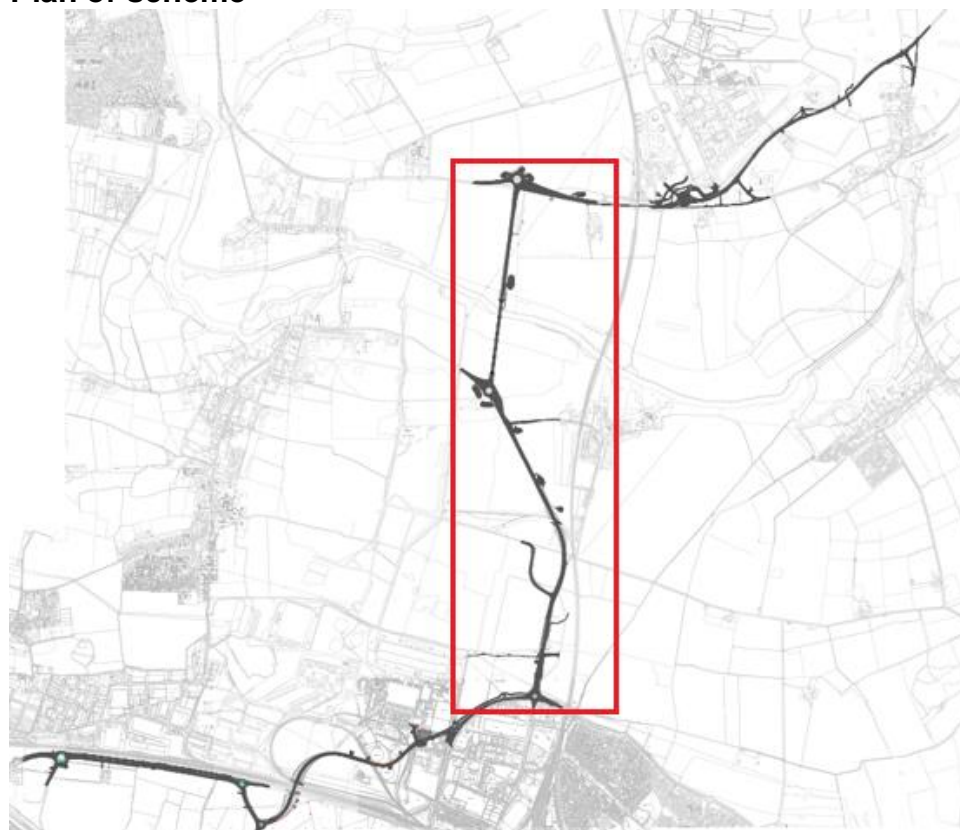
Local authority area	South Oxfordshire District Council/Vale of White Horse District Council
Location	Didcot
Project description	Didcot Science Bridge – A new road link from the new dualled section of the A4130, over the A4130, Great Western Mainline and Milton Road connecting back to the A4130 north of the Purchas Road roundabout, including pedestrian and cycling infrastructure.
Current stage	Preliminary design
Expected delivery date	2024
Total cost	£57,995,000
Funding sources	Part funded by S106 with forward funding from Housing Infrastructure Fund

Plan of scheme



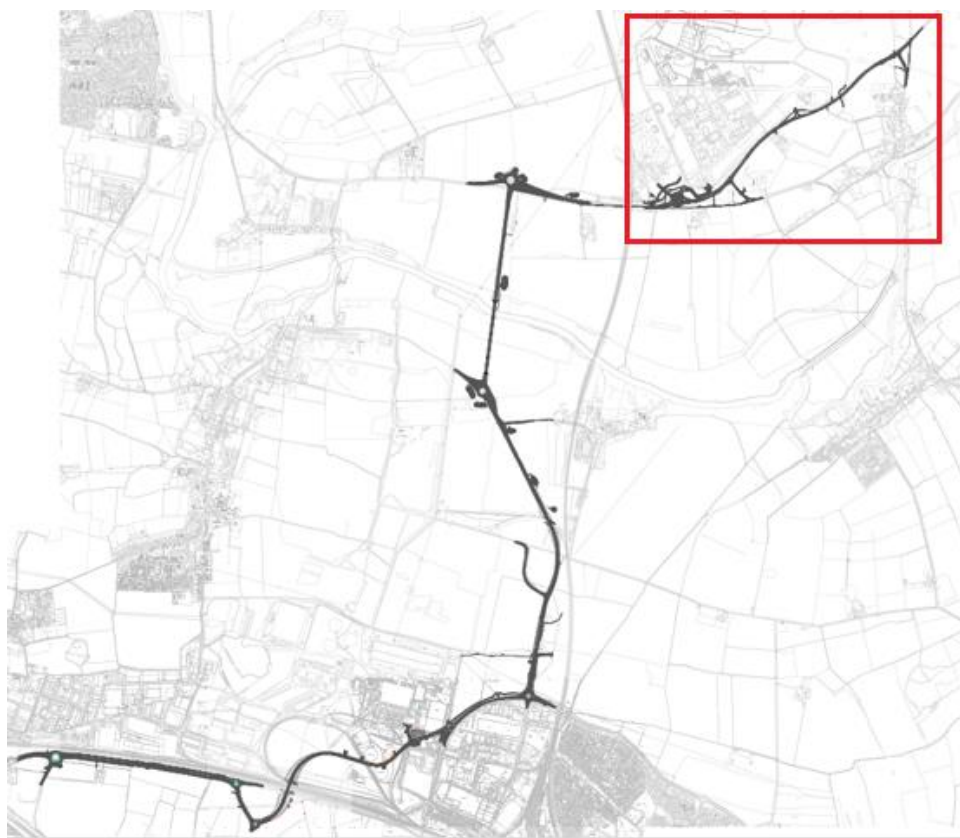
Local authority area	South Oxfordshire District Council/Vale of White Horse District Council
Location	Didcot and Culham
Project description	Didcot to Culham River Crossing – a new road including two new bridges, one over the River Thames and one over a private railway siding, between Didcot’s A4130 Northern Perimeter Road Collett Roundabout to the A415 west of Culham Science Centre. The proposal also includes the provision of new and improved pedestrian and cycling facilities.
Current stage	Preliminary design
Expected delivery date	2024
Total cost	£125,947,000
Funding Sources	Part funded by S106 with forward funding from Housing Infrastructure Fund

Plan of scheme



Local authority area	South Oxfordshire District Council
Location	Clifton Hampden Clifton Hampden Bypass-a new road between the A415, Abingdon Road, at the Culham Science Centre and B4015, Oxford Road, north of Clifton Hampden Village. Including the provision of new and improved pedestrian and cycling facilities
Current stage	Preliminary design
Expected delivery date	2024
Total cost	£27,844,000
Funding	Part funded by S106 with forward funding from Housing Infrastructure Fund

Plan of scheme



Local authority area	Vale of White Horse District Council
Location	Wantage
Project description	Wantage Eastern Link Rd
Current stage	Preliminary design
Expected delivery date	September 2022
Total cost	£6.52m (estimate)
S106 contribution	£6.16m
Additional funding sources	Growth Deal

Plan of scheme (OCC to deliver green section)

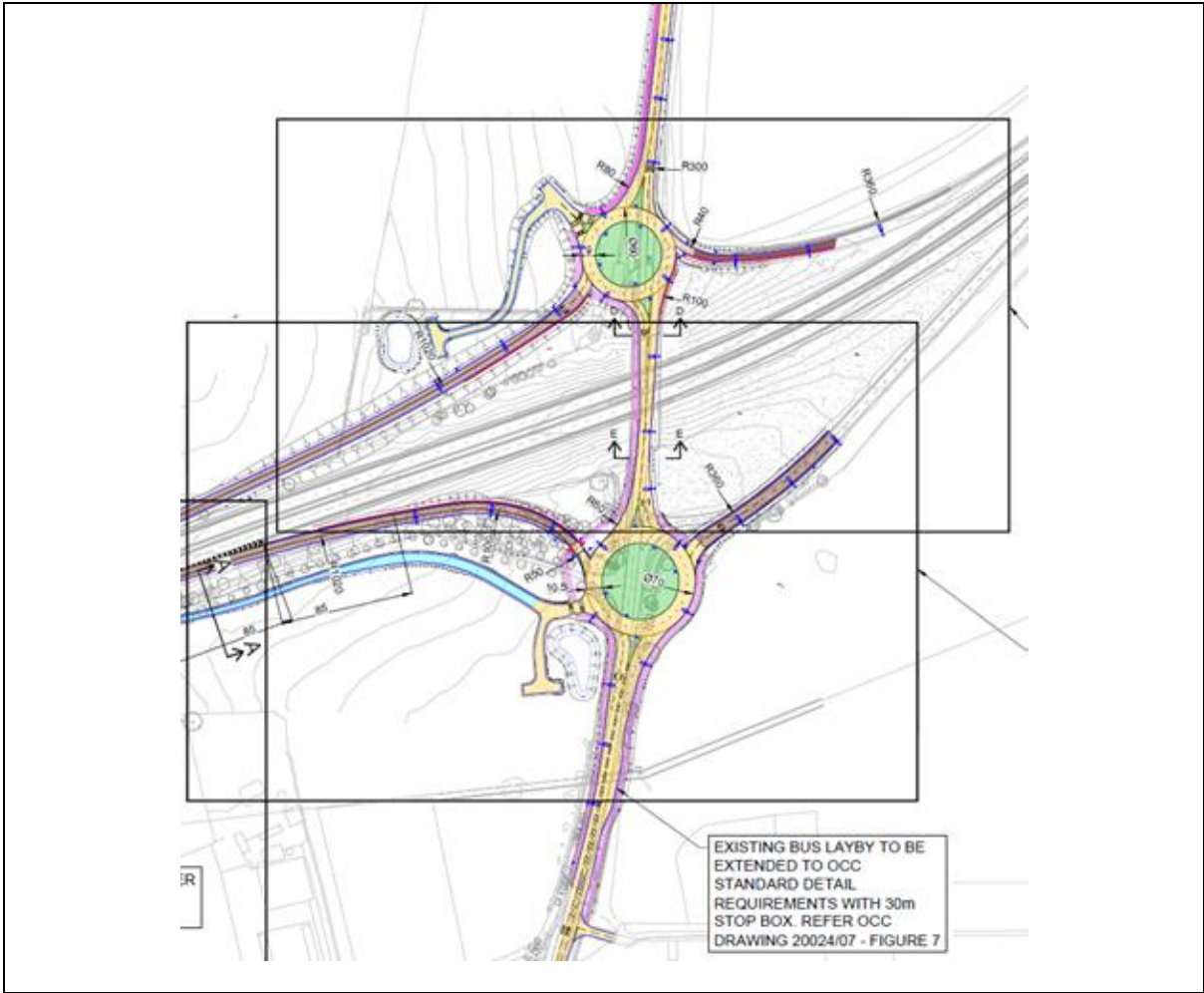


Local authority area	Vale of White Horse District Council
Location	Lodge Hill, Abingdon
Project description	Reconfiguration of the Lodge Hill interchange to provide 'dumb-bell' roundabout configuration and southbound slip roads. Will additionally include the re-provision of a private road, replacement lay-by parking along the A34 and traffic calming schemes along Sugworth Lane and Bagley Wood Road/
Current stage	Preliminary design
Expected delivery date	2024
Total cost	£27 million (estimate)
S106 contribution	£6.5 million
Funding Sources	MHCLG, Growth Deal & S106

Location Plan



Interchange Extract



Waste Disposal

Statutory requirements

9.36 Under the Environmental Protection Act 1990, the County Council is required to perform the statutory functions of the Waste Disposal Authority for Oxfordshire. This includes arranging for the disposal and recycling of Local Authority Collected Waste arising in the county, which is waste collected by the district and city councils in their role as Waste Collection Authorities, and waste received at Household Waste Recycling Centres (HWRCs). The County Council is required to provide HWRCs in its area where residents may deposit their own household waste free of charge. There are currently 7 of these provided by Oxfordshire County Council.

Future priorities

9.37 Where appropriate, the County Council will require developers to mitigate the impact of housing developments on HWRCs by financially contributing through S106 planning obligations. The S106 calculation will be based upon the cost of providing the required total HWRC network acreage, the cost of providing the footprint and buildings and the total number of new dwellings proposed across Oxfordshire that are contributing to the increase in waste.

Adult Social Care

Statutory obligations

9.38 The County Council provides a range of services including promotion of wellbeing, commissioning care, and managing provider failure, and other service interruptions. We also provide information and advice to vulnerable people and their families and carers and assists with market-shaping, commissioning care and support services for people in need.

9.39 The County Council is principally governed by the [Care Act 2014](#) and the [Health and Social Care Act 2012](#) and applies to the population as a whole, not just those who are eligible to receive care services.

9.40 Although the County Council is not required to own or maintain housing, we do have a responsibility within the Care Act of ensuring that people with support needs are adequately and safely housed and in suitable living accommodation also offering and arranging day services or community-based activities: where linked to accommodation this is usually provided by housing associations or care home providers, with the care or support commissioned by OCC.

Future priorities

9.41 As Oxfordshire's population grows, ages and lives longer there are programmes underway for example Extra Care housing. Other specialist housing demand for residents such as adults with disabilities, which will grow with the rising population. Currently, the County Council ensures that needs are reflected in emerging Local Plan policies and will consider the use of S106 obligations to facilitate delivery as development sites come forward in the future.

Fire and rescue services

Service overview

9.42 The County Council, in its capacity as the Fire and Rescue Authority (FRA), has statutory duties under The Fire and Rescue Services Act 2004 to make provisions for:

- extinguishing fires
- protecting life and property in the event of fires
- rescuing and protecting people in the event of a road traffic collision
- rescuing and protecting people in the event of other emergencies.

The service operates from 25 fire stations, a headquarters building, a training and development centre, and additional sites providing support services.

9.43 FRAs need to collect information to assess risk in their areas as well as protect the health and safety of their workers. According to the Fire and Rescue National Framework for England each FRA must produce a Community Risk Management Plan (CRMP) that identifies and assesses all foreseeable fire and rescue related risks that could affect its community. The Oxfordshire CRMP is available via this link [CRMP](#)

Future priorities

9.44 Increases in population place additional demand on fire and rescue resources in terms of capital investment, equipment, and revenue budgets for firefighters, officers and support staff. There may be a need to build a new fire station, extend an existing fire station, extend communication infrastructures, or review staffing levels for example.

9.45 Fire hydrant provision forms part of the planning process, as explained earlier in this document. In the future, FRAs are including the use of fire suppression systems, particularly sprinklers, to protect the most at risk and vulnerable in society.

9.46 Currently, the County Council is working with our local authority partners to plan effectively for new or realigned capacity through Local Plans. This ensures that stations are in the right areas and involves engagement with adjoining authorities where demand overlaps county boundaries.

Libraries

Statutory requirements

9.47 The County Council has a duty to provide a comprehensive and efficient library service for everyone who lives, works, or studies in the county under the Public Libraries and Museums Act 1964.

9.48 The County Council is committed to maintaining and modernising its libraries to continue to meet the changing needs of service users and to cope with additional demand brought about by new development.

9.49 Libraries are no longer a place solely to borrow books. They function as a community hub offering services, events, and facilities to cater for a range of community needs.

Future priorities

9.50 The County Council's libraries are updated and improved to cope with additional demand brought about by increasing numbers of users resulting from housing growth.

9.51 Where additional capacity is required, libraries may be extended (or replaced) to allow more public access either by expanding the floor space, or converting existing space from an office, workroom or used as storage.

9.52 Where there is no viability to extend or increase space, libraries may also be reconfigured to:

- allow different types of customers to use them at different types of the day
- allow them to be used by community groups and/or paying organisations to deliver events.
- replace traditional large enquiry desks with smaller counters with the use of more flexible ICT to increase space for public use.
- increase provision of dedicated workspaces and study areas with new furniture to reflect the increased use of personal devices such as laptops and tablets.
- install technology that will enable library opening hours to be extended.
- install moveable shelving to offer greater flexibility in terms of how the space is used.

9.53 We work with our local authority partners through Local Plans and engagement on specific development applications to ensure that our local libraries

are fit for purpose and expanded and/or improved to meet new demand from growth locations.

9.54 We seek to continually update, modernise and improve our library facilities and services to reflect the changing needs of library users in Oxfordshire including its growing population.

Future Projects include

- Faringdon Library – a full refurbishment planned for 2021-22 including a totally redesigned interior and some exterior work.
- Bampton Library – a full refurbishment planned for 2022 and delivered alongside a community funded project to develop the local archives.
- Banbury Library – a major project to relocate the existing library to a more prominent and suitable location, and to increase in floorspace and book stock to meet the demands of the growing population.
- Library Furnishings – a major upgrade and expansion of library seating and workspaces in 11 of our largest libraries in 2021.
- Chinnor Library – full refurbishment of the library planned for 2022.
- Blackbird Leys Library – an upcoming major project to be delivered in partnership with the City Council that involves the library moving to a new community hub.

Other Services

9.55 Other county council services which may be required as a result of growth include economic development; archaeology; green infrastructure and sustainable drainage systems. This list is not exhaustive. As planning obligations for these services are sought, they will be reflected in future editions of this document.

Appendix 1 – S106 expenditure funding used on projects 2020/21

NB – For schools this table shows the amount of S106 used, (rounded to the nearest £) on the project in the reporting period. It is not the total project cost of providing the pupil places. In many cases expansion capital projects are phased over more than one year, and the amount shown is only the expenditure in the reporting year.

Location of spend	Scheme	Amount
Hanwell Fields Primary School, Banbury	Expansion to 2FE (105 new pupil places)	£58,000
Queensway Primary School, Banbury	Expansion to 2FE (210 new pupil places)	£100,000
Longfields Primary School, Bicester	Expansion to 2FE (105 new pupil places)	£203,000
Sutton Courtney CE Primary School	Expansion AN20 – 1FE (70 new pupil places)	£180,000
Faringdon Community College	Expansion by 2FE (300 new pupil places)	£758,000
Fitzwaryn (special) School, Wantage	Expansion (16 new pupil places)	£62,444
Matthew Arnold (secondary) School, Cumnor	Expansion by 1FE (150 new pupil places)	£150,685
Warriner secondary school, Bloxham	Expansion by 2FE (300 new pupil places)	£1,420,000
Marcham primary school	Expansion AN20 –1FE (70 new pupil places)	£553,714
John Blandy Primary School, Southmoor	Expansion 1FE-1.5FE (105 new pupil places)	£1,011,861
North Leigh CE Primary School	Replacement of prefabricated temporary classroom unit with permanent building	£1,000
Chesterton CE Primary School	Expansion AN20 –1FE (70 new pupil places)	£268,260
West Witney Primary School	Expansion to 2FE (105 new pupil places)	£1,132,944
Barton Park Primary School, Oxford	New Primary School (315 new pupil places + nursery)	£2,826,000

Cherry Fields Primary School, Banbury	New Primary School (210 new pupil places + nursery)	£2,961,000
Gagle Brook Primary School, Bicester	New 2FE Primary School (210 new pupil places + nursery)	£118,037
Kingfisher Special School, Abingdon	Replacement of prefabricated temporary classroom and expansion (8 new pupil places)	£150,000
Chilton Primary School	Expansion 1FE-1.5FE (105 new pupil places)	£88,000
Burford Primary School	Expansion AN15-AN20 (35 new pupil places)	£211,925
East Hanney St James CE Primary School	Expansion 0.5FE - 1FE (105 new pupil places)	£223.79
Milton St Blaise CE Primary School	Expansion to 1FE (105 new pupil places)	£774,276
St Andrew's CE Primary School Chinnor	Expansion 1.5FE-2FE (105 new pupil places)	£1,100,000
Five Acres Primary School	Replacement of prefabricated temporary classrooms with 2 permanent classrooms	£675,000
Long Hanborough Manor CE Primary School	Expansion 1FE-1.5FE (105 new pupil places)	£1,758,953
Bardwell Special School, Bicester	Expansion and new school hall (16 additional pupil places)	£400,000
Wallingford School (Secondary)	Expansion by 2FE (300 new pupil places)	£600,000
Banbury, Blessed George Napier School (Secondary)	Expansion by 2FE (300 new pupil places)	£273,456
Whitelands Academy (New SW Bicester Secondary)	New 11-16 Secondary School (600 new pupil places)	£5,151,000
GEMS Wantage Primary Academy (New NE Wantage Primary)	New 2FE Primary School (420 pupil places + nursery)	£145,295
West Witney Primary School	Expansion 1FE-1.5FE (105 new pupil places)	£100,000
Graven Hill, Bicester	New 2FE Primary School (210 new pupil places)	£100,000

Faringdon Primary	Expansion and relocation of Faringdon Infant School (210 new pupil places)	£530,000
GEMS Didcot Primary Academy (New Primary School Didcot GWP)	New 2 FE Primary School (420 pupil places + nursery)	£1,215,408
The Swan School, Oxford	New 11-16 Secondary School (900 new pupil places)	£113,320
Eynsham Primary School	New classroom block to provide sufficient accommodation for school to be able to operate at 2FE	£15,000
Bletchington Primary School	Relocation and expansion of Bletchington CE Primary School (35 New pupil places)	£41,555
Botley Primary School	Expansion from 1.5FE to 2FE (105 new pupil places)	£250,000
Fir Tree Junior School, Wallingford	Provision of learning support spaces	£60,000
Cheney School, Oxford (Secondary)	Expansion by 1FE (150 new pupil places)	£1,348,000
Bardwell Special School, Bicester	Expansion to provide additional places (12 new pupil places)	£176,000
Carterton Community College (Secondary)	Improvements to ICT infrastructure	£12,243

Libraries		
Location of spend	Scheme	Amount
Bicester library	Capital drawdown	£7,402
Wheatley Library	New moveable shelving and kinder boxes to support increased capacity.	£15,230
Carterton Library	Stud Wall; book stock and new seating area	£5,000

Adult Social Care		
Location of spend	Scheme	Amount
Redlands day services	Banbury Community Support Services	£57,973
Bicester courtyard	Adult Social Care Team base in Bicester	£4,000

Transport		
Location of spend	Scheme	Amount
A361	Road safety improvement	£171,645
Eastern Arc Phase 1	Access to Headington	£249,781
Science Vale	Cycle network	£199,896
Warriner School	Layby	£9,260.24
Southam Road, Banbury	Bus infrastructure improvements	£9,614
Witney	Coral Spring puffin and footwork links	£163,623
Wantage	Denchworth Road bus stops improvement	£77,772
Bankside, Banbury	Traffic calming scheme	£9,678
Adderbury, Gracewell CH	Bus shelters	£6,336
Long Hanborough	A4095 Main Road Bus information improvements	£20,642
Banbury	Springfield Avenue RSI	£13,354
Didcot	A4130 Milton Gate bus stop shelter	£12,168
Banbury	A361 cycle improvements	£14,664
Shrivenham	High Street/Townsend Road bus stop	£6,896
Wantage	Crab Hill bus information point	£23,575
Upper Heyford	Camp Road bus stop	£7,630
Letcombe Regis	Signing and lining	£4,483
County wide	Bus stop priority provision	£25,883
Bloxham	Barford Road Street lighting column	£1,693
East Hanney	A338 Puffin crossing	£810
Bicester	Charlotte Ave, BS RTI	£5,617.50

Arcott	Murcott Road	£11,898
Littlemore	Armstrong Road, waiting restrictions	£3,364
X8 Aylesbury – Thame - Oxford	Bus service	£24,306
40 High Wycombe – Thame	Bus service	£14,100
250 Oxford – Heyford Park - Bicester	Bus service	£222,197
X3 Barton Park – JR Hospital – Oxford – Abingdon	Bus service	£33,333
15/19 Witney – Abingdon/ Carterton	Bus service	£116,287
X9 Witney – Charlbury – Chipping Norton	Bus service	£44,337
275 Oxford – High Wycombe	Bus service	£23,370
320 Chinnor – Princes Risborough	Bus service	£22,302
233 Burford – Witney - Woodstock	Bus service	£197,179
488 Banbury – Chipping Norton	Bus service	£59,016
29/H5 Bicester – Ambrosden – Arcott/JR Hospital	Bus service	£29,333
B3 Banbury town service	Bus service	£134,363
B4 Banbury town service	Bus service	£146,609
B5 Banbury town service	Bus service	£62,689
B9 Banbury town service	Bus service	£133,512
S4 Banbury – Deddington – Oxford	Bus service	£50,052
66 Swindon – Faringdon – Oxford	Bus service	£28,683
11 Watlington – Oxford	Bus service	£58,083
33 Abingdon – Didcot – Wallingford	Bus service	£10,925
X36 Wantage – Grove – Didcot	Bus service	£54,167
45 Abingdon – Culham	Bus service	£19,583

67 Wantage – Faringdon	Bus service	£70,333
94 Chilton – Didcot	Bus service	£58,536
95 Didcot – Culham	Bus service	£9,500
98 Harwell – Didcot	Bus service	£358,745
136 Benson – Wallingford – Cholsey	Bus service	£32,439
X2 Oxford – Abingdon – Didcot	Bus service	£33,333
X32 Wantage – Didcot – Oxford	Bus service	£30,850
X38-40 Oxford – Wallingford – Henley/Reading	Bus service	£68,419
Villager community bus services in West Oxfordshire	Bus service	£17,885
BPS Barton Park – JR Hospital	Bus service	£97,480
The Bourtons Parish Council	Funding agreement for community bus services	£36,706
Henley	Bus service	£40,573
Chipping Norton	Bus service	£5,000
Bicester	Esso roundabout	£203,784
Wallingford	Reading Road bus shelter	£46,420

Countryside, Waste and Minerals		
Location of spend	Scheme	Amount
Lower Windrush Valley		£24,817
Millenium Common		£2,500
Great Coxwell	Funding agreement to Great Coxwell parish council	£16,662
Oakley Wood – WRC- Earth Trust		£1,209

Appendix 2 - New agreements 2020/21

Oxfordshire County Council Reference	Local Planning Authority	Planning Application	Link to LPA Website	Address
BN70	Cherwell District Council	20/00247/F	Link to planning application	Land South East of Tramway Road (Manjake)
BN71	Cherwell District Council	19/00128/HYBRID	Link to planning application	Banbury 15 (land N of J11 of M40 and W of A361)
BR48	Cherwell District Council	17/02534/OUT	Link to planning application	Land North of Bicester Avenue Garden Centre, Oxford Road, Bicester aka Bicester Office Park
BR49	Cherwell District Council	20/00530/F	Link to planning application	Land Lying to the North of Akemand Street, Blackthorn, Bicester known as Extension to Symmetry Park, Bicester
BR50	Cherwell District Council	20/03404/F	Link to planning application	Unit B Symmetry Park, Bicester
BR51	Cherwell District Council	19/02311/OUT	Link to planning application	Land at Kings End, Bicester

CT10	Cherwell District Council	19/01746/OUT	Link to planning application	Land Adjacent to Promised Land Farm, Wendlebury Road, Chesterton
CT11	Cherwell District Council	19/01740/HYBRID	Link to planning application	Land adjacent to Promised Land Farm, Wendlebury Road, Chesterton, Oxfordshire - HYBRID
CT12	Cherwell District Council	19/02550/F	Link to planning application	Relating to Land to the East of M40 and South of A4095, Chesterton, Bicester
DE03	Cherwell District Council	19/02444/OUT & 19/00831/OUT	Link to planning application Link to planning application	Land South of Home Farm House Clifton Road Deddington
GB04	Cherwell District Council	20/00981/R56	Link to planning application	Little Bourton Acres, Hanwell Lane, Great Bourton
KI44	Cherwell District Council	19/02756/OCC	Link to planning application	62 High Street Kidlington OX5 2DN
UH19	Cherwell District Council	16/02446/F	Link to planning application	Phase 9, Heyford Park, Upper Heyford
AB92	Vale of the White Horse District Council	P19/V3223/FUL	Link to planning application	1 The Quadrant, Abingdon, OX14 3YS
CI07	Vale of the White Horse District Council	P20/V0419/FUL	Link to planning application	Land at South Car Park, Rutherford

				Appleton Laboratory, Harwell Campus
DC09	Vale of the White Horse District Council	MIL/59/132A-X	Link to planning application	Site 1, Milton Park, Abingdon
EA11	Vale of the White Horse District Council	P19/V0910/FUL	Link to planning application	Land at Hanney Nurseries, Steventon Road, East Hanney
EH07	Vale of the White Horse District Council	P20/V0784/FUL	Link to planning application	Land West of Thompson Avenue, Harwell Campus, Didcot, OX11 0TA
EH08	Vale of the White Horse District Council	P20/V0743/FUL	Link to planning application	Land West of Thompson Avenue, Harwell Campus, Didcot, OX11 0TA
HA25	Vale of the White Horse District Council	P20/V0806/FUL	Link to planning application	Land South of Rutherford Avenue, Harwell, OX11 0GD
HA26	Vale of the White Horse District Council	P20/V3062/FUL	Link to planning application	Land North of Fermi Avenue, Harwell Campus, Didcot, OX11 0QX
KB11	Vale of the White Horse District Council	P20/V0200/FUL	Link to planning application	Kingston Bagpuize Business Park, Kingston Bagpuize, Abingdon OX13 5AS
SC23	Vale of the White Horse District Council	P15/V2933/O	Link to planning application	North of Appleford Road, Sutton Courtenay

SC24	Vale of the White Horse District Council	P20/V2712/FUL	Link to planning application	Former Harmsworth Printing Building, Milton Road, Didcot, OX11 7HH
BE15	South Oxfordshire District Council	P17/S1964/O	Link to planning application	Land to the north east of Benson to the north of Watlington Road/The Sands B4009 and the east of Hale Road Benson (NE Benson)
BG02	South Oxfordshire District Council	P16/S3462/O	Link to planning application	West Side of Wimblestraw Road, Berinsfield
CL17	South Oxfordshire District Council	P19/S2924/FUL	Link to planning application	Wallingford Road, Cholsey
CR15	South Oxfordshire District Council	P18/S0827/O & P16/S3608/O	Link to planning application Link to planning application	Land East of Benson Lane, Crowmarsh Gifford, Wallingford
GO04	South Oxfordshire District Council	P19/S4248/FUL	Link to planning application	BP Technology Centre, Bozedown Drive, Whitchurch Hill, RG8 7QR
HP04	South Oxfordshire District Council	P19/S2646/FUL	Link to planning application	Land at Highlands Farm, Highlands Lane, Rotherfield Greys, Henley RG9 4PR

WA33	South Oxfordshire District Council	P18/S0003/FUL	Link to planning application	Portcullis Club, 28 & 29 Goldsmith Lane, Wallingford
WA34	South Oxfordshire District Council	P20/S1179/FUL	Link to planning application	Land South of Hithercroft Road, Wallingford
WA35	South Oxfordshire District Council	P14/S2860/O	Link to planning application	West of Wallingford (Site B)
WC05	South Oxfordshire District Council	P18/S3769/FUL	Link to planning application	Chiltern Rise Cottage, Garden Cottage & Stable Cottage, Reading Road, Woodcote,
WH06	South Oxfordshire District Council	P19/S4482/FUL	Link to planning application	1, 3 and 5 Park Hill, Wheatley
WL09	South Oxfordshire District Council	P15/S0198/FUL & P15/S0199/LB	Link to planning application Link to planning application	Joyce Grove, Nettlebed, RG9 5DF
CN27	West Oxfordshire District Council	19/03318/FUL	Link to planning application	18-19 Market Place, Chipping Norton
GT06	West Oxfordshire District Council	18/03319/OUT	Link to planning application	Land at Enstone Airfield, Chipping Norton, Oxfordshire
LH10	West Oxfordshire District Council	18/03403/FUL	Link to planning application	Land at Oliver's Garage, 80-82 Main Road, Long Hanborough

LH11	West Oxfordshire District Council	R3.0054/20	Unilateral Undertaking	Land at Hanborough Manor C of E School, Riley Close, Long Hanborough
NL08	West Oxfordshire District Council	20/01756/FUL	Link to planning application	Eynsham Hall, North Leigh, Witney
WI86	West Oxfordshire District Council	20/02391/FUL	Link to planning application	Land South of Burford Road, Witney

Appendix 3 - Developer Obligations, received but unspent 2020/21

Oxfordshire County Council Reference	EDUCATION		Amount (£)
	Location	Infrastructure the funding is allocated to	
TW04	Tetsworth	Primary education	206,835.87
GR22	Grove	Primary education	289,784.94
GR22	Grove	Secondary education	277,588.04
GR22	Grove	Special educational needs	9,571.16
GR22	Grove	Youth	3,504.71
BR21	Bicester	Secondary education	676,854.23
BR21	Bicester	Primary education	2,715,283.50
WT16	Shrivenham	Primary education	57,395.85
WT16	Shrivenham	Secondary education	66,773.47
ES38	Stanton Harcourt	Primary education	259,412.16
BT05	Bampton	Primary education	329,630.85
BT05	Bampton	Nursery	33,937.20
AB89	Abingdon	Primary education	1,933,980.58
AB89	Abingdon	Secondary education	2,315,533.98
AB89	Abingdon	Special educational needs	202,919.25
WI77	Witney	Temporary school transport	45,998.35
WI77	Witney	Primary education	1,586,339.78
WI77	Witney	Secondary education	930,102.69
GR27	Grove	Primary education	368,353.17
GR27	Grove	Secondary education	5,818,851.19
LH06	Long Hanborough	Secondary education	415,871.22
OB46	Oxford	Primary	1,002,415.43
BN29	Banbury	Youth	6,527.66
BN29	Banbury	Education infrastructure	1,178,551.94
ES36	Eynsham	Primary education	125,129.68
ES36	Eynsham	Secondary education	899,209.68

NL06	Northleigh	Primary education	131,855.59
BO29	Botley	Primary education	145,788.82
BO29	Botley	Secondary education	135,600.76
CN25	Chipping Norton	Primary education	398,233.16
CN25	Chipping Norton	Nursery	40,868.36
CA29	Carterton	Primary education	6,768,755.75
CA29	Carterton	Special educational needs	155,817.16
NL04	Northleigh	Primary education	94,617.39
GR27	Grove	Primary education	368,353.17
GR27	Grove	Secondary education	5,818,851.19
AB90	Abingdon	Primary education	504,018.62
CI03	Chilton	Primary education	96.83
WI80	Witney		42,698
BN41	Banbury	Primary education	193,676.93
WT15	Shrivenham	Primary education	205,825.24
WT15	Shrivenham	Secondary education	143,219.64
WI81	Witney	Secondary education	947,746.78
CA24	Carterton	Primary education	170,344.23
CA24	Carterton	Secondary education	216,811.23
BL09	Bloxham	Primary education	51,469.96
BL09	Bloxham	Secondary education	56,431.03
BL09	Bloxham	Special educational needs	2,603.49
AT01	Aston	Primary education	255,563.81
AT01	Aston	Secondary education	296,450.04
AT01	Aston	Special educational needs	14,027.38
BC03	Bletchington	Primary education	40,614.26
WO18	Woodstock	Temporary transport	42,890.08
WO18	Woodstock	Multi use games area	239,849.29
WO18	Woodstock	Primary education	1,108,382.85
MI08	Milton	Primary school	1,451,793.72
CA31	Carterton	Early years	10,517.70
CA31	Carterton	Primary education	105,474.62
EC03	East Challow	Special educational needs	2,070.48

EC03	East Challow	Secondary education	54,411.33
EC03	East Challow	Primary education	33,761.41
CL17	Cholsey	Primary education	128,981.01
CL17	Cholsey	Secondary education	304,081.67
WA27	Wallingford	Secondary education	748,960.11
BN57	Bodicote	Secondary education land	168,198.87
BN57	Bodicote	Primary education land	176,824.46
BN57	Bodicote	Primary education	1,203,277.18

TRANSPORT			
Oxfordshire County Council Reference	Location	Infrastructure the funding is allocated to	Amount
BO29	Botley	Cycle safety	145,800
BO29	Botley	Signalised crossing	39,210.11
BO29	Botley	Controlled parking zone	93,960
BO29	Botley	Highways consultation	1,123.32
BO29	Botley	Travel plan and monitoring	7,998.71
CA31	Carterton	Highways	77,374.44
DI93	Didcot	Public Transport Infrastructure	95,071.70
GR22	Grove	Public transport services	131,127.29
GR22	Grove	Transport (strategic)	260,647.44
BS02	Marcham	Bus service improvement	53,353.38
TH39	Thame	Traffic regulation order	3,120
BR29	Bicester	Traffic regulation order	2,632.05
CA32	Carterton	Public transport infrastructure	9,909.60
CA32	Carterton	Public Transport Service	47,273.30
AB89	Abingdon	Public Transport	220,692.25
AB89	Abingdon	Strategic transport	877,051.88
FR05	Freeland	Bus service improvements	39,261.02

FR05	Freeland	Bus stop improvements	10,539
OB62	Oxford	Transport	48,988.43
GR27	Grove	Public transport	728,377.93
UH17	Upper Heyford	Public transport	64,316.99
UH08	Upper Heyford	Bus service	85,348.82
BN29	Banbury	Transport infrastructure	107,318.56
GB04	Great Bourton	Traffic regulation order	3,190
NL06	North Leigh	Bus Premium route	2,210.46
NL06	North Leigh	Bus shelter	17,325.80
OB60	Oxford	Transport	19,902.94
EH07	East Hendred	Bus service	19,259.50
CN25	Chipping Norton	Public transport	110,684.73
CA29	Carterton	Bus infrastructure/Highway	512,416
CA29	Carterton	Public transport	887,040
NL04	North Leigh	Public transport	43,762.96
BR44	Bicester	Interim bus service	42,135.26
BR44	Bicester	Bus infrastructure	20,873.22
BR44	Bicester	Cycle improvements	93,586.94
BR44	Bicester	Traffic calming	7,044.98
WI77	Witney	Public Transport	458,059.75
BR21	Bicester	Highways	327,709.58
BR21	Bicester	Railway	135,044.07
ML03	Minster Lovell	Cycle transport	154,063.09
ML03	Minster Lovell	Public transport	66,751.08
BR43	Bicester	Public transport	24,691.97
AB90	Abingdon	Bus shelter	9,836.33
AB90	Abingdon	Cycle parking	6,332.40
AB90	Abingdon	Public transport	105,962.39
BR52	Bicester	Transport	100,380
CN25	Chipping Norton	Highways	19,313.82
CN25	Chipping Norton	Public transport	110,684.73
FA33	Faringdon	Bus service improvement	236,656.47
NL08	North Leigh	Highway works	41,356.51
NL08	North Leigh	Public transport	35,000

BN41	Banbury	Public transport	174,945.74
BN41	Banbury	Transport	190,431.73
BR33	Bicester	Bus service	24,089.67
CA26	Carterton	Highways	198,447.40
SM01	Stadhampton	Bus service	158,344.70
BL09	Bloxham	Transport	47,464.09
AT01	Aston	Bus stop	8,906.40
AT01	Aston	Public transport	24,980.72
WA26	Wallingford	Public transport	51,142.07
BE07	Benson	Public transport	34,161.85
SW02	Shipton under Wychwood	Public transport	25,465.26
ES33	Eynsham	Public transport	56,016.28
ES33	Eynsham	Bus real time information	19,216.75
UH15	Upper Heyford	Bus stop	2,147.20
UH15	Upper Heyford	Bus services	26,840
SV10	Stanford in the Vale	Public transport infrastructure	6,542.40
SV10	Stanford in the Vale	Public transport services	37,863.96
WN32	Wantage	RTI equipment	17,581.41
WN32	Wantage	Public transport	177,796.14
RA01	Radley	Bus service	6,651.98
MI08	Milton	Pedestrian crossing	85,232
BN69	Banbury	Infrastructure	7,856.15
BN69	Banbury	Public transport	14,491.75
WB02	Warborough	Public transport	32,458.11
EH08	East Hendred	Public transport	12,444.60
WO18	Woodstock	Bus service infrastructure	338,605.90
WI81	Witney	Bus service improvement	62,325.93
EC03	East Challow	Transport	8,661.50
WA27	Wantage	Bus infrastructure	55,156.50
WA27	Wantage	Transport infrastructure	324,450
WA27	Wantage	Zebra upgrade	103,384.97
WA27	Wantage	Public transport services	172,308.29
OA79	Oxford	Cycle safety	32,130.04
BN29	Banbury	Public transport	317,716.40

BU06	Burford	Public transport	98,362.24
BU07	Burford	Barns Lane	2,000
RA02	Radley	Cycle parking	31,860.70
WI81	Witney	A40 Junction	733,598.15
BN48	Witney	Highways	103,418.80
BN48	Bodicote	Cycle	55,010
CI08	Chilton	Public transport	5,926
CI09	Chilton	Public transport	12,296.45
WA29	Wantage	Public transport	47,424.56

Oxfordshire County Council Reference	LIBRARIES		Amount
	Location	Infrastructure the funding is allocated to	
GR22	Grove	Library	10,927.18
BR21	Bicester	Library	210,936.04
AB89	Abingdon	Library	144,568.43
WT16	Shrivenham	Library	3,455.76
BT05	Bampton	Library	20,595.45
BN29	Banbury	Library	39,288.30
LH06	Long Hanborough	Library	8,759.52
NL04	North Leigh	Library	5,679.32
CA22	Carterton	Library	12,988.80
WI77	Witney	Library	72,099.43
CN25	Chipping Norton	Library	25,197.74
CA24	Carterton	Library	6,069.60
AT01	Aston	Library	14,441.25
BL09	Bloxham	Library	3,071.08
SW02	Shipton Under Whychwood	Library	17,620.03
WI81	Witney	Library	77,869.73
EC03	East Challow	Library	2,333.49
OA79	Oxford	Library	15,075.80
FA28	Faringdon	Library	8,106.65

ADULT SOCIAL CARE			
Oxfordshire County Council Reference	Location	Infrastructure the funding is allocated to	Amount
GR22	Grove	Day care	13,173.81
BR21	Bicester	Day care	261,329.53
WT16	Shrivenham	Social and Healthcare	2,465.73
BN29	Banbury	Adult social care	16,931.22
OB46	Oxford	Adult social and healthcare	28,135.59
AT01	Aston	Social and healthcare	12,056.79
EC03	East Challow	Social and healthcare	972.01
FA28	Faringdon	Social and healthcare	8,273.82

WASTE MANAGEMENT			
Oxfordshire County Council Reference	Location	Infrastructure the funding is allocated to	Amount
BR21	Bicester	Waste Management	156,876
GR22	Grove	Waste Management	8,528.49
BN29	Banbury	Waste Management	14,904.20
WI77	Witney	Waste Management	72,099.43
CA22	Carterton	Waste Management	10,137.60
BL09	Bloxham	Waste Management	1,156.19
AT01	Aston	Waste Management	10,873.63
EC03	East Challow	Waste Management	280.33
FA28	Faringdon	Waste Management	6,327.13

COUNTRYSIDE			
Oxfordshire County Council Reference	Location	Infrastructure the funding is allocated to	Amount
TH38	Thame	Rights of Way	5,198
AB89	Abingdon	Rights of Way	68,581.50
CA29	Carterton	Rights of Way	60,984
DU06	Ducklington	Countryside	14,000.79
BN29	Banbury	Rights of Way	16,510.13
BR21	Bicester	Rights of Way	16,649.01
CA22	Carterton	Countryside	3,960

ADULT LEARNING			
Oxfordshire County Council Reference	Location	Infrastructure the funding is allocated to	Amount
WT16	Shrivenham	Adult Learning	418.43
BN29	Banbury	Adult Learning	5,086.56
AT01	Aston	Adult learning	1,771.85

MUSEUMS			
Oxfordshire County Council Reference	Location	Infrastructure the funding is allocated to	Amount
GR22	Grove	Museum	666.25
BN29	Banbury	Museum	2,311.25
AT01	Aston	Museum	849.43
EC03	East Challow	Museum	38.09
FA28	Faringdon	Museum	494.32

MINERALS SITES			
Oxfordshire County Council Reference	Location	Infrastructure the funding is allocated to	Amount
SH01	Shipton	Management fund contribution	£1,583.62

FIRE & RESCUE			
Oxfordshire County Council Reference	Location	Infrastructure the funding is allocated to	Amount
CA24	Carterton	Fire & rescue	£71,862.15

Includes the following funding transferred from West Oxfordshire District Council in 2020/21

Agreement Reference	Service area	Amount (£)
FR05	Bus Services contribution	48,011
FR05	Bus Stop improvements	10,539
WI80	Education	42,698
ES29	Public rights of way	36,834